



### Say Goodbye to **Allergies™**

This software evaluates levels of substances that can affect allergies and Asthma, including medications, biochemicals, vitamins, minerals, herbs, toxins and immune system components.



### **Asthmathematics™**

The increase of food additives and environmental pollutants has caused asthma to be on the rise. This software is designed to create management reports that will help determine the Frequency Equivalent causes of airway obstruction, cough, chest tightness and recurrent difficult breathing.



### **BA Adrenal Burnout™**

The ever-increasing speed of modern life with information and deadlines pummeling the brain can initiate a "fight or flight" response. This excessive stress can cause adrenal overload. Considers genetic and biochemical factors.



### **BackOut™**

BackOut was created specifically for the millions of back sufferers and their medical providers. It includes frequencies for the spine, back and abdominal muscles that create back stress and pain. Helps identify root cause of Back Stress.



### The Gray Matter of **Alzheimer's™**

No one on this planet really understands the ravages of Alzheimer's on the human brain. This is our attempt to add BioAcoustic information that may permit prediction, repair and prevention of this silent killer of the mind.



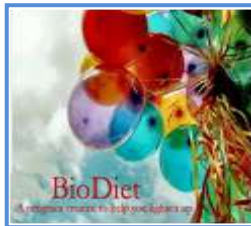
### **Anxiety Monitor™**

Often referred to as "nerves" and dismissed as minor, the increasing incidence of anxiety as a cause as well as a symptom of severe, life-incapacitating syndromes cannot be underrated. This program evaluates causes and therapies of anxiety.



### Exploring **Arthritis™**

Americans are living longer and expected to remain active and self-supporting. Arthritis can affect not only overall quality of life but a person's ability to care for him/herself. This program differentiates between types of anxiety as well as causes and therapies.



### **BioDiet™**

An incredible evaluation of the neurotransmitters responsible for weight management. Includes GABA, Insulin, Dopamine, Serotonin and Epinephrine Frequency Equivalent factors and proteins to help identify weight-related issues.



### **BioHazard™**

Man's inhumanity to man and innocent animals is acutely shown by our ability to muck up our planet with manmade hazards that are resistant to antibiotics, flesh-eating bacteria and gene-altering substances, and we will continue to add new biohazards as warranted.



### **Blood Clotting™**

A stroke is the rapidly developing loss of brain function(s) due to a disturbance in the blood supply to the brain likely caused by a clot. Early warning factors and controls can be BioAcoustically monitored in hopes of preventing deficits in cognitive and/or tissue damage.



**Blood Works™** - Professional version only

Provides a Frequency Equivalent analysis of individual blood status. Not designed to replace medical laboratory reports. This software should only be used for research comparison purposes.



**Super Brain™**

Designed to reveal information to support optimal form and function of the human Central Processing Unit. Can be used to provide guidance for a variety of issues that deal with the physical function of the brain.



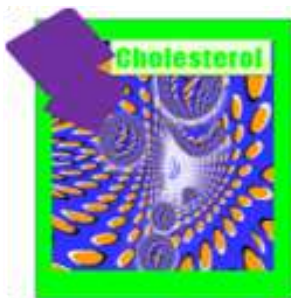
**Cancer Absolute™**

Cancer Absolute lists all of the common biomarkers found in BioAcoustic cancer studies. It is a quick and easy way to compare concurrent biofrequencies found in the profiles of clients diagnosed with cancer; covers most types of cancer and cancer treatments.



**Cancer Crusade™** - for experimental use only

Early assessment is this killer's greatest advantage for survival. Advances in medicine indicate people are living longer with cancer diagnosis. As well as aiding in detection, this program can help monitor the debilitating effects of treatment of both medications and radiation.



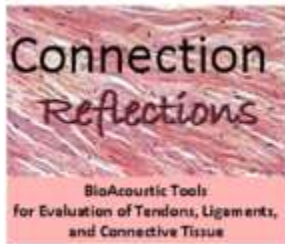
**Containing Cholesterol™**

Cholesterol is an essential component of all cell membranes; it helps establish proper permeability and fluidity. It is required to build and maintain nerve sheathing, intracellular transport, and production of hormones and neurotransmitters.



### **Circulation Rotation™**

Designed to identify Frequency Equivalents related to movement of fluids and associated elements and compounds through the vessels of the body.



### **Connection Reflections™**

Designed to perform BioAcoustic evaluations of potential inflammation associated with joint and muscle pain, and the accompanying lack of mobility and stiffness of tendon, ligament and connective tissue.



### **Depression Depths™**

Depression deters you from continuing a path that is not conducive to your optimal wellbeing. Check here for nutrients, toxins, biochemistry and genes associated with depression.



### **Detox Deterrents™ - An Apple a Day Keeps the Doctor Away**

Designed to assist the body to identify toxins, pollution, radiation and harmful elements associated with the need to detoxify.



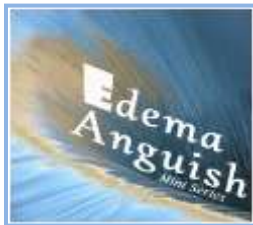
### **Digestion Basics™**

Examines the many facets of indigestion and digestion. From mastication to elimination, foodstuffs go through thousands of processes to create useful compounds in support of life and living. From absorption to elimination and from kitchen to bathroom, these pathways are fascinating.



### **Disturbing Liver™**

Designed to identify liver stress associated with such issues as diabetes, infertility, nerve degeneration, high cholesterol, Alzheimer's, adrenal Stress, statin drug usage... Does not cover injury to the liver due to alcohol abuse. A liver that is not functioning optimally may be a contributing factor for many inflammatory, immune, reproductive, circulatory, obesity, toxicity and cognitive disorders. In the wake of potential statin drug damage, this software is a must for those working with any of the issues above.



### **Edema Anguish™ - Mini Series Software**

Uncomfortable and often misunderstood, edema can be transfiguring and incredibly troublesome. Fluids from many sources, a myriad of causes and illusive organ systems can be involved.



### **Eye Watcher™**

Designed to help monitor the frequency relationships of nutrients, genes, muscles, proteins and biochemical of the eye associated with Macular Degeneration, Cataracts...



### **Fatigue Fundamentals™**

Exhaustion plagues millions of people each day. Mental, biochemical, emotional and physical issues are involved. Explained in terms of Frequency Equivalents™, the many facets of fatigue are examined.



### **Fat Switch™**

Individual metabolism is the key to weight management. Our genetic "thrifty genes," designed to allow us to survive during Dr. Richard Johnson's research into how uric acid, Vitamin C, corn syrup, Cortisol and many other mitochondrial biochemicals may be influencing your weight management goals.

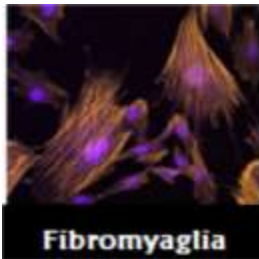


FATTY LIVER

### **Fatty Liver™**

Fatty liver disease is very common in middle-aged Americans, with incidence increasing with the obesity epidemic. Major risk factors include obesity and type 2 diabetes, though it is also associated with excessive alcohol consumption.

It usually causes no symptoms, but they include fatigue, weight loss, and abdominal pain.



Fibromyalgia

### **Fibromyalgia™**

Considered by many to be a "non-disease", the debilitating effects of Fibromyalgia continue to frustrate the millions who suffer from long-term, body-wide pain and tenderness of joints, muscles, tendons, and other soft tissues. It is very likely that Fibromyalgia results from the body's inability to rid itself of debris and toxic chemicals. The commonality among Fibromyalgia sufferers is an abundance of lactic acid, too little pyruvate and cellular oxygen and/or an abundance or unbalanced level of iron.



### **Flexibility™**

Joints, muscles, vessels, organs, tendons, ligaments, nerves...they all need the ability to move and flex to optimally serve the body. So if moving any structure or fluid is an issue for you, maybe the answer is in the BioAcoustic Flexibility software.



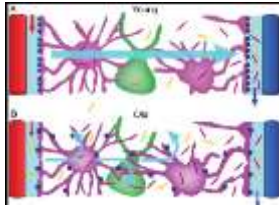
### **Food Additives™**

Seasonings, stabilizers, flavorings and colorants enhance the taste of food but some strange ingredients are involved, from beetle blood to embalming fluid. When you find out what you are really eating you may want to become a raw food enthusiast.



### **Gallbladder Distress™ - Mini Series Software**

The gallbladder creates bile which helps the digestion of oils and fatty foods. If fats and cholesterol are not properly digested, gallstones (hard pebbles) can form within the gallbladder. Humans can live without a gallbladder but many contributing factors can be identified before surgery becomes necessary.



### **Glymph™**

The glymphatic clearance pathway was described and named in 2013 as a system for waste clearance in the central nervous system (CNS) of vertebrates. Glymphatic flow was initially believed to be the answer to the long-standing question of how sensitive neural tissue of the CNS functions without a lymphatic drainage pathway for extracellular proteins, excess fluid, and metabolic waste.



### **Hair Apparent™**

The normal cycle of hair growth lasts for 2 to 6 years. Each hair grows less than ½ inch per month during this phase. About 90% of the hair on your scalp is growing, while 10% rests. After 2-3 months, the resting hair falls out and new hair starts to grow in its place. If it is apparent your cycle is off-balance, we want to help you make it grow.



### **Hearing, Smelling, Swallowing, Tasting™**

Hearing, Smelling, Swallowing, Tasting was created at the request of BioAcoustic Providers who work with clients unable to use senses that have been dulled by age, an accident, medical stress or damage.



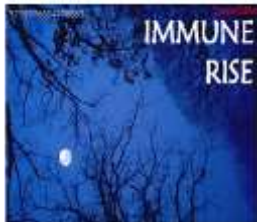
### **Heart Tracker™**

Designed to monitor heart health. Includes hyper/hypotension, circulation, clotting factors, genetics, environmental issues, enzymes, proteins, etc. This is an upgrade of the original Heart software.



### **Hormones/Receptors™**

What happens when hormones are present but not useful? Personal experiences can become a distorted, painful, dark place. Unfortunately, you can't purchase a Hormone Receptor over the counter, but identifying the frequency, your Hormones and Receptors can begin to explain what makes our world go 'round.



### **Immune Rise™**

Every person on earth is different; his/her DNA proves it. DNA-guided, Immune Rise reports are based on your own unique genetic code in terms of your potential to maintain immune integrity. Many companies test disease expression of DNA. If expense and time are issues, Vocal profiling results are nearly immediate, non-invasive and cost effective.



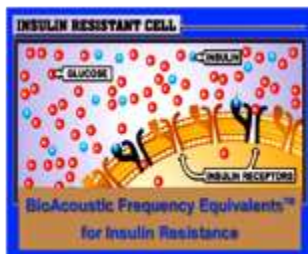
### **Incontinence Pressure™ - Mini Series Software**

As our society becomes more stressful, our bodies rebel. Two of the initial minerals to fall prey to stress are calcium and magnesium. This software seeks to identify issues dealing with incontinence which is just one outward indicator that a much larger fluid exchange disruption may be manifesting throughout the body.



### **Inflammation Detectors™**

Inflammation is an organism's protective attempt to remove the injured stimuli as well as initiate the tissue's healing process. This software attempts to evaluate long-term inflammation associated with joint/muscle pain, loss of structural function/mobility and organ/vascular insufficiency. Many diseases are thought to originate in inflammation And the lack of appropriate inflammatory mediators.



### **Insulin Resistance™**

Metabolic Syndrome X (also known as Metabolic Syndrome, Syndrome X, and Insulin Resistance Syndrome) is a cluster of symptoms that may be caused by a combination of genetic and lifestyle factors. BioAcoustically it includes receptors, proteins and genes in support of optimal blood sugar.





### **Kidney Functions™**

These exquisitely designed biofilters serve several essential life functions. They include homeostatic functions, blood filtration, waste removal and vital nutrient and water reabsorption. They also produce the hormones calcitriol, renin and erythropoietin.



### **Krebs Cycle™**

The Krebs Cycle software explores the body's energy production biochemicals that are essential for everyone from birth to death, but especially important for anyone with cellular and immune issues. The Krebs Cycle supports our constant need for energy on all levels.



### **Life Sines™ (Fertility and Reproduction)**

This experimental program evaluates the natural processes of male and female fertility factors. It also provides a tool to monitor pregnancy Throughout the gestational period, initial labor and delivery.



### **Lewy Body Dementia™**

This affects an estimated 1.3 million individuals and is often mistaken for Parkinson's or Alzheimer's. Symptoms include loss of motor control and mental decline. This is the disease that pushed actor and comedian Robin Williams over the edge. Early detection is possible.



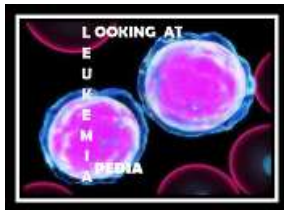
### **Lingering Lymes™ - Mini Series Software**

An emerging infectious Lyme epidemic is being experienced in the US, particularly the northeast. Lingering Lyme was designed to identify the presence of all three Lyme-associated bacteria. Without identification and early treatment symptoms can become latent and later attack joints, the heart and the central nervous system. Both ALS and Multiple Sclerosis have been mistaken for Lyme disease.



### **Lipedema™**

This is an incurable, chronically progressive affliction that occurs almost exclusively in women. It causes a symmetrical accumulation of fat in the subcutaneous tissue that disproportionately affects the lower limbs from buttocks to ankles. The legs may also be sensitive and prone to easy bruising. In some cases, the upper arms can also accumulate distinct patterns of fatty tissue.



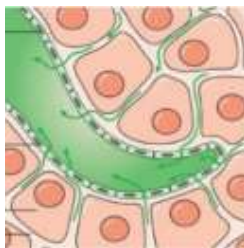
### **Leukemia Looking™**

Disgusting food; bad water, air and thoughts; stress...all are pushing our bodies over the brink, and the body is repelling by refusing to renew itself. Leukemia Looking is the plethora of leukemia diagnoses, and a result of the insult we are levying on our bodies to the point of extinction.



### **Lupus Trails™**

Lupus is an autoimmune disease associated with connective tissues. It can affect any part of the body, causing inflammation and tissue damage.



### **Lymph Essentials™**

The lymph system circulates interstitial fluids throughout the body. Lymph vessels collect and exchange fluids that act to filter, cleanse, maintain and drain away unwanted debris. It is known to be immune-Supportive. Damage to lymph nodes can be genetic, from medical treatment, physical and inflammatory. Lymph fluids contain white blood Cells, especially lymphocytes that attack unwanted pathogens.



### **Maintenance & Repair™**

BioAcoustically speaking, the body defines itself using frequency. These biomarkers are used as a communication system that manages the cellular restructuring of the vibrational blueprint for all maintenance and repair. This program strives to identify and focus on the cellular scaffolding of the body.

## Mapping Methylation™



The Methyl Cycle is the backbone of our physiology. Its functional status determines our resistance or susceptibility to environmental toxins and microbes. A defect at any one point in these interlocking cycles will inevitably affect the remaining pathways and make your overall health suffer. If Methyl Cycle abnormalities are not addressed, an underlying, unexplained or chronic illness will remain chronic and unexplained. The Methyl Cycle abnormalities



## Medication Mapping™

Hundreds of new pharmaceuticals are approved each year, and negative side effects are expected and budgeted into production of any new drug. BioAcoustically identify medications and their potential interactions with individual wave file samples.



## Menses™ - Mini Series Software

Referred to as "a period" or "that time of the month," women from puberty to menopause experience a menstrual cycle as part of human reproduction. This software concentrates on skipped menses (amenorrhea), heavy (menorrhagia), painful (dysmenorrhea) and light (hypomenorrhea) cycles to identify factors involved in an atypical Menses.



## Migraine Manager™

Migraines are one of the most debilitating, intermittent disorders on the planet; just ask anyone who experiences them. Migraines are primarily circulatory, hormonal, genetic and/or stress-related but can also be caused by structural misalignment. This program was designed to identify the frequency-based biomarkers associated with migraines.



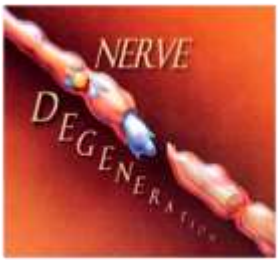
## Muscle Management™

Want to keep your players off the bench and efficiently plan your next workout? Muscle Management can BioAcoustically predict weak or strong muscles before they become injuries.



### **Muscle Performance™**

Want to play a better, injury-free game? Let Muscle Performance BioAcoustically evaluate your muscle status as you prepare to engage in your favorite activity/sport. Individual reports for each sport or a combination of reports can be created with just a few clicks of your mouse.



### **Nerve Degeneration™**

An extensive list of brain components is evaluated in this program, as well as toxins, biochemicals, medications, vitamins, pathogens; the involvement of measles/mumps that may affect nerve degeneration; plus, evaluations in relationship to Parkinson's, MS, and ALS.



### **Neuroplasticity™**

Optimize your brain power by seeing that your old brain learns new tricks. Includes a variety of brain-enhancing nutrients and supplements.



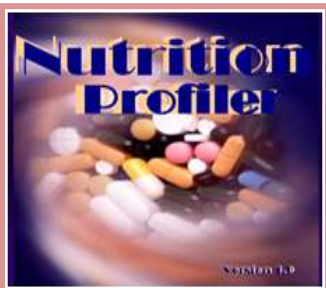
### **New Skin™**

The barrier between our body and the outside world is largely taken for granted. Learn about the function, uses and difficulties of our largest elimination organ, the skin.



### **New Woman™**

Designed for the modern woman who wants to monitor biomarkers associated with women issues surrounding female, hormonal Cancers.



### **Nutritional Consultant™**

You could be taking the wrong supplements. Bioacoustics Vocal Profiling software can provide a daily determination of nutritional needs in terms of the Frequency Equivalent™ for vitamins, minerals, fatty acids, amino acids, antioxidants, cell salts and enzymes.



### **Osteoporosis™**

Prevention of "Dowager's Hump" or other bone loss scenarios become more critical as we live longer. This program evaluates genetic susceptibility to as well as preventative measures and therapies for osteoporosis.



### **Parkinson's Commons™**

Designed to separate a diagnosis of Parkinson's into several other possible issues: dystonia, tremors, Lyme's, tetanus, inflammation, allergies, wheat sensitivity, nerve degeneration, radiation exposure, Maintenance & Repair, vocal damage, seizures and spasticity. Does not include any of these issues but contains some major FE's from each.



### **Parkinson's Influence™**

Parkinson's Disease is a degenerative disease of the brain's central nervous system that often impairs motor skills, speech and other functions. In 2004 Pfizer sponsored research showing that biomarkers for Parkinson's could be predicted using vocal profiling.



### **Peripheral Neuropathy™**

This is the most common disorder of the peripheral nervous system. Damage to peripheral nerves can result in numbness, pain, and weakness. Neuropathy typically affects the hands and feet, but can involve other parts of the body.



### **Peyronie Points™**

Peyronie's disease is a condition in which a man's penis is bent by the development of fibrous plaques or nodules on the shaft of the penis. The Peyronie's, AKA bent or crooked penis, is sometimes more difficult to treat than the actual symptoms. May evolve into Dupuytren's contracture.



### **Plant Enzymes™** from Therazymes

Based on the enzyme products created by Howard Loomis that help the body use plant-based enzymes for optimal digestion. Each enzyme is correlated with nerve innervations of spinal vertebrae.



### **PreVac™** - pre-and post-identification

Experimental computer program designed to identify the potential negative reactions to immunizations and vaccinations.



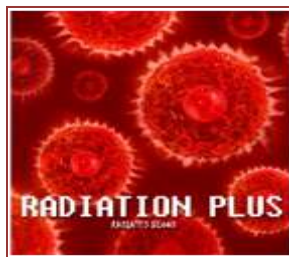
### **PTSD - TBI™** (Post Traumatic Stress Disorder - Traumatic Brain Injury)

Designed to evaluate voice frequencies that are associated with the genomes, proteins, activators, nutrients, receptors and neurotransmitters of Post-Traumatic Stress Disorder and Traumatic Brain Injury – specifically developed with our returning soldiers in mind.



### **Pumping Iron™**

Whether it be 5G or pandemic residue, BioAcoustically speaking, both situations have been found to be closely involved with the use of iron within the body, not just the presence but use via iron regulatory proteins. Research completed in December 2019 confirmed that iron regulatory proteins have a direct mathematical relationship with the gene and proteins associated with the present pandemic.



### **Radiation Plus™**

Fukushima is an eminent source of radiation exposure, but what about other types of radiation that we are exposed to every day? Includes



### **Radical Factors™**

One factor of aging is the body's inability to get rid of waste materials created by everyday living. Free radicals are known to cause damage to the cells by causing the cell to be less reactive and less able to participate in cell regeneration. Antioxidants ameliorate free radical damage that has been linked to aging.



### **Recreational Drugs™**

Designed to show the frequency relationships between psychoactive pharmaceuticals and street drugs.



### **Respiration Rescue™**

Airborne pathogens and toxins are bombarding our body every minute. Lung stress is among the most threatening and frightening threats we can experience. Designed to predict, Bioacoustics Respiration evaluates what you can do to prevent and ameliorate issues that Frequency Equivalents can address.



### **Rejuvenation™**

Designed to identify the genes, proteins and biochemicals associated with LIFE renewal and anti-aging.



### **ReVoice™**

Designed to help people recover their ability to speak with ease and efficacy after stroke or trauma has struck.



### **Seizure Perspectives™**

In seizure disorders, the brain's electrical activity is periodically disturbed, resulting in some degree of temporary brain dysfunction. Normal brain function requires an orderly, organized, coordinated discharge of electrical impulses. This program provides Bio Acoustical assessment based on Sound Health case studies dealing with seizure concerns.



### **Shingles Sensitivity™**

Shingles are caused by the herpes zoster virus that causes chickenpox. It is a latent and painful attack of the nerve cell bodies. Designed to identify the presence of the underlying viral frequencies, Shingles Sensitivity strives to identify the stresses associated with a Shingles outbreak.



### **Sleeping™**

Sleep disorders are increasing in modern society. Various aspects of sleep disorders, medications, vitamins and other factors are evaluated in this program.



### **CheckPoint™**

Many small databases clustered to evaluate the most common modern day dilemmas.



### **Spasticity and Dystonia™**

Embarrassing as well as disabling, these muscle disorders can be inherited and/or caused by physical trauma, poisoning or drug reactions. This program isolates the causes; genetic, biochemical, medication, toxins and other factors.



### **Teeth Integrity™**

What started out as a small tooth identification chart has ended up being one of the largest BioAcoustic software programs. Dental Caries has been identified as the most prevalent disease on the planet. We have tried to identify which tooth is associated with which body system and how this correlation can be supported via frequency-based biomarkers.

\*Includes TMJ





### **Tetanus Trauma™**

The long-term symptoms of tetanus are often misdiagnosed as Parkinson's. Tetanus bacteria play an important part in muscular spasticity, agility, stiffness and pain. \*Stiff Person's syndrome often has a tetanus component.



### **Thalassemia**

Thalassemias are inherited blood disorders that result in abnormal formulation of hemoglobin. It can be seen as mild to severe and involve multiple iron, folic acid and ferritin issues. Often the spleen is involved. Most common in Italian, Greek, Middle Eastern, South Asian and African descent.



### **The Herbal™**

From your window herb box to exotic deep forest constituents, we bring you frequency-based information about Mother Nature's medicine cabinet. We will likely add to this compendium of herbs and oils for many years to come.



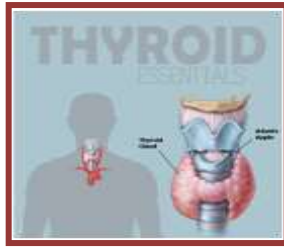
### **TheSeXFactors™**

Designed to identify and enhance sexual performance and pleasure for partners, groups or self-indulgence.



### **Them Bones™**

Essential to our protection, structure, support and form to our bodies. Frequency biomarkers for a myriad of traumas and diseases that attack the bone matrix proteins and supporting minerals are examined.



### **Thyroid Essentials™**

Many health issues find thyroid function as their foundation. Essential to energy production, reproductive issues, immune stability, PMS, hormone use and stress tolerance are all related to thyroid function.



### **Toxin™**

Many health symptoms resulting from the 9/11 catastrophe are beyond conventional medicine. The first responders still do not get the comprehensive care needed to identify the unusual outcomes of this manmade tragedy. Issues from cancers to respiration and beyond are BioAcoustically identified.



### **Tremor Troubles™**

Involuntary trembling of any part of the body can have nutritional, electrical, genetic, biochemical or emotional causes. This software has been incredibly helpful in identifying the root cause of idiopathic tremors.



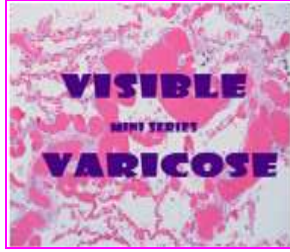
### **Trigger Points™**

The body is a miraculous network of interconnected neurons that often cross paths with pain sensory feedback. Referred pain often masks the site of experienced pain, while Trigger Points identifies the origin location and root cause of the pain.



### **Ultimate Diet™**

It's not about calories or exercise; It's about metabolism! The software combines everything about every organ and system that monitors and manages metabolism in weight management.



### **Visible Varicose™ - Mini Series Software**

Tortured veins rebel by enlarging and distorting. Although most noticeable varicose veins are near the surface of the skin, veins throughout the body can be involved. Varicose veins can be attributed to poor circulation, vascular integrity, vein pressure, valve function and lifestyle, and they can also be hereditary.



### **Ye GAD's!™**

One of the most important projects ever to be developed by Sound Health, this software examines your relationship with GAD 65 and GAD 67, two of the most important genes in the body and the root of nearly all incurable diseases, and exposes genetic engineering that could devastate our health.